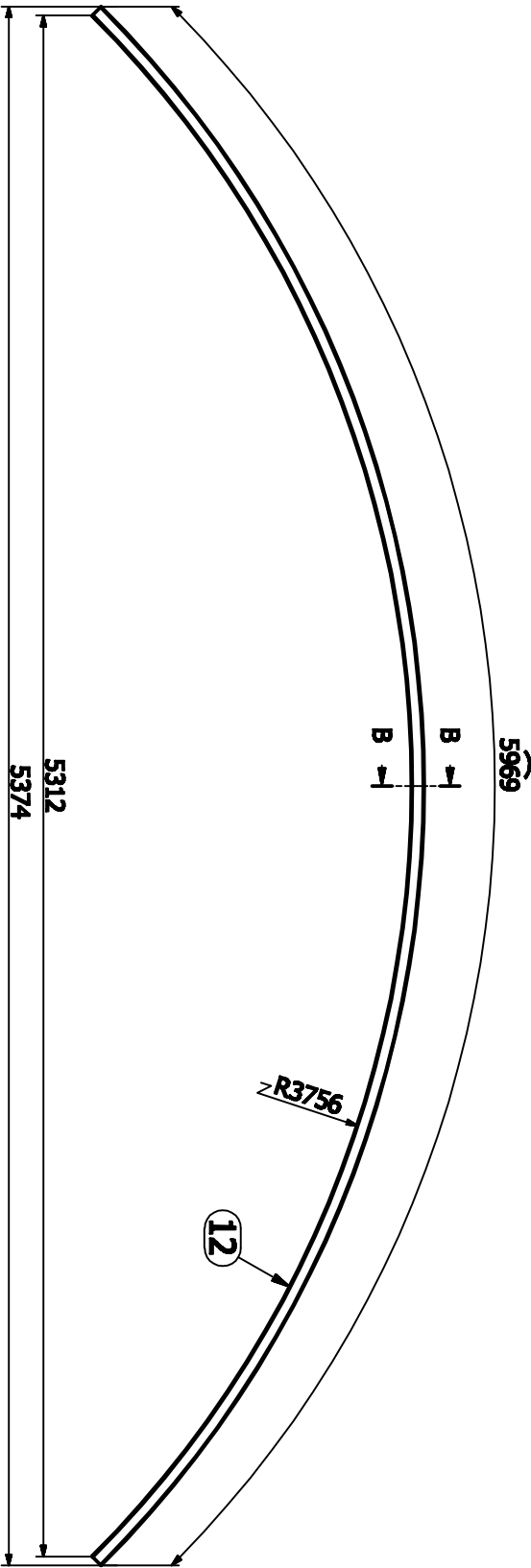
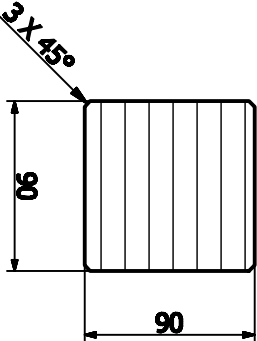
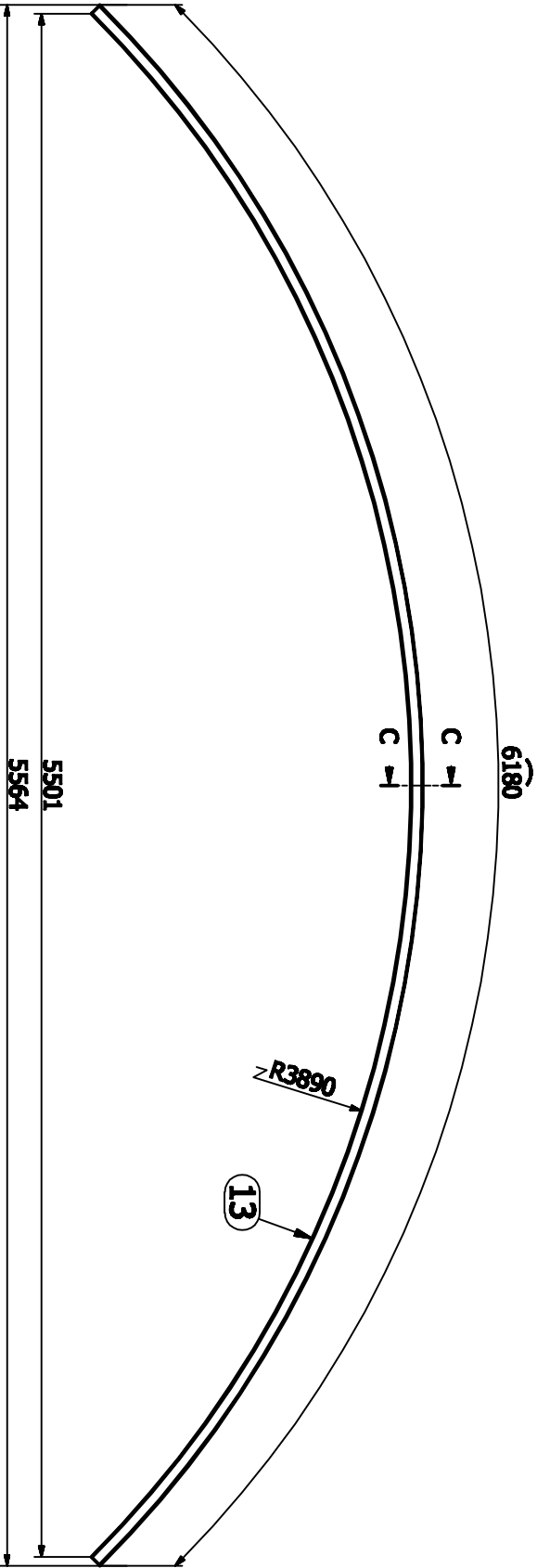
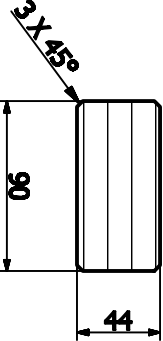


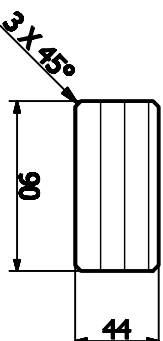
A-A (1:4)



B-B (1:4)



C-C (1:4)



|   |                  |
|---|------------------|
| FIRMA BUDOWLANA <b>MAZAN</b> MAREK ZDROJEWSKI 14-200 Janina ul. Dąbrowskiego 6a tel. (089) 648-77-74 kom. 0502-438-025 e-mail: mazanprojekt@o2.pl |                  |
| <b>SZCZEGÓŁY</b>  | <b>1:25</b>      |
| Włata rowerowo - rekreacyjna Grabowiec gm. Susz dz. nr 42 --- Gmina Susz  | 12.11.2013       |
|   | <b>6</b> ARCHIT. |